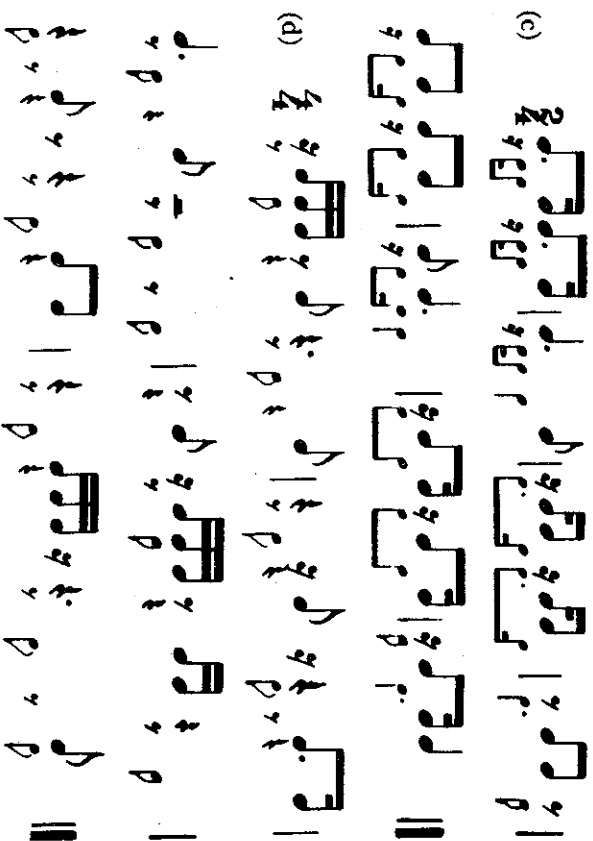
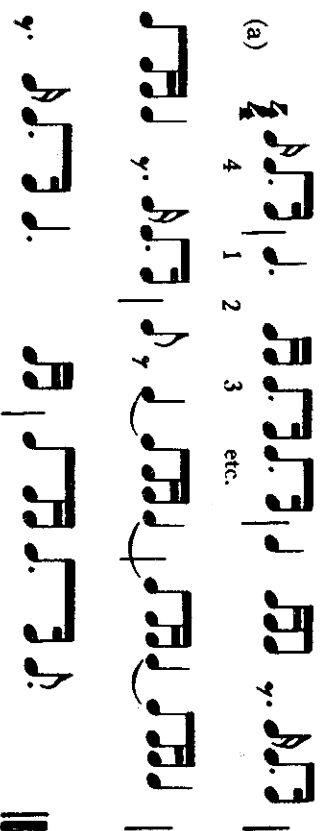




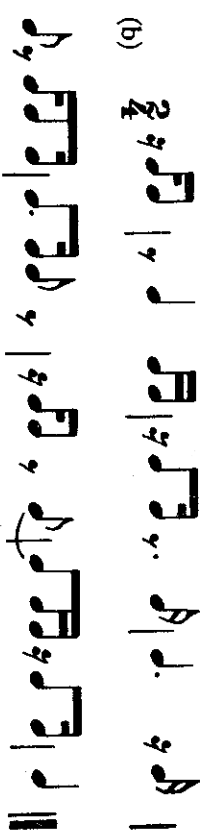
More difficult:



3. Play, counting the beats aloud:





[ 48 ]



More difficult:



NOTATION: (1) If the regular number of beats in the measures of a piece changes, a change of time-signature has to be marked after the bar-line. In case the change occurs after the final measure of a staff, the new time-signature has to be marked both after the last bar-line on the old staff, and at the beginning of the new staff.

(2) The *repetition sign*  implies that a piece or section is to be repeated. If the repetition goes back to the beginning of a piece, no additional sign is necessary. But for repetitions of middle sections the start of the section to be repeated has to be marked thus: .

The repetition sign may take the place of a bar-line but does not necessarily count as one. Consequently a measure may be interrupted by it and continue after it.

[ 49 ]