

The essential element of the augmented sixth chord is the augmented sixth interval G-natural / E-sharp. Notice the G (LE in B minor) moving to F-sharp (SO); notice the E-sharp (FI in B minor) moving to F-sharp (SO). These F-sharps support the dominant harmony to which augmented sixth chords resolve.

A musical score for the song 'The Rose Tree'. It consists of two staves, a treble staff and a bass staff, both in the key of D major (two sharps) and common time (C). The melody is written in the treble staff, starting on a half note D4, followed by a quarter note E4, a quarter note F#4, and a half note G4. The bass staff provides a simple accompaniment, starting on a half note D3, followed by a quarter note E3, a quarter note F#3, and a half note G3. The piece ends with a double bar line.

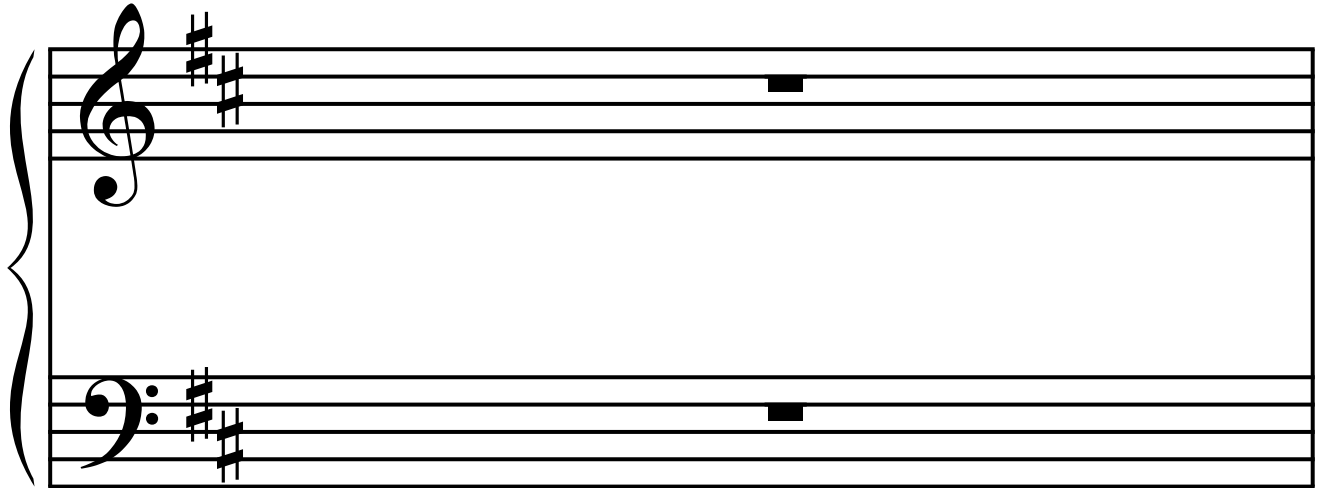
8 7

6 5

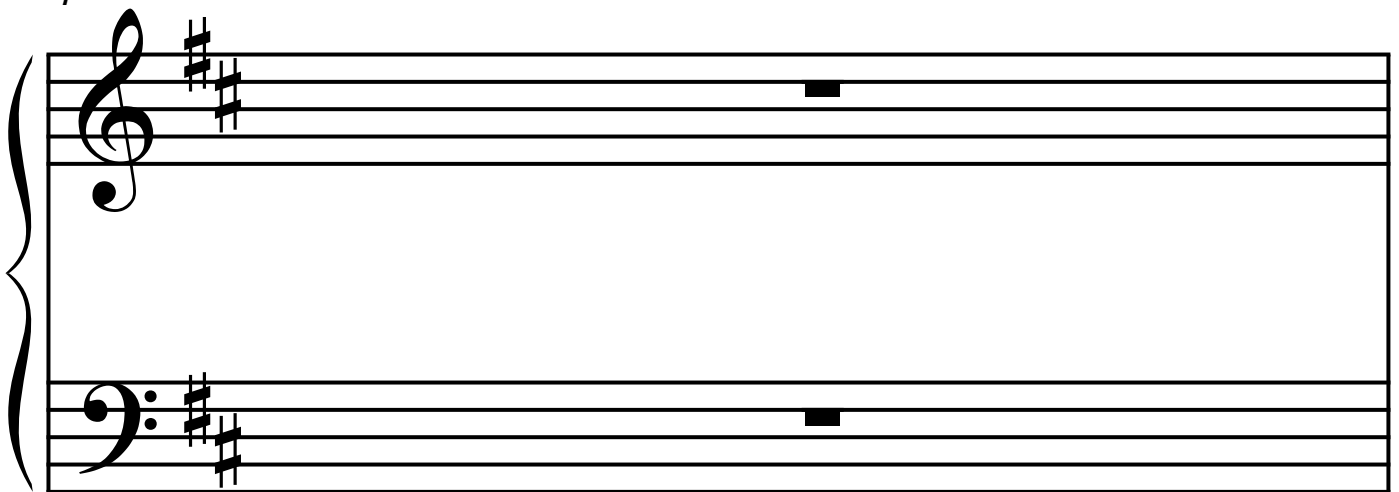
4 3

B minor: i German V i

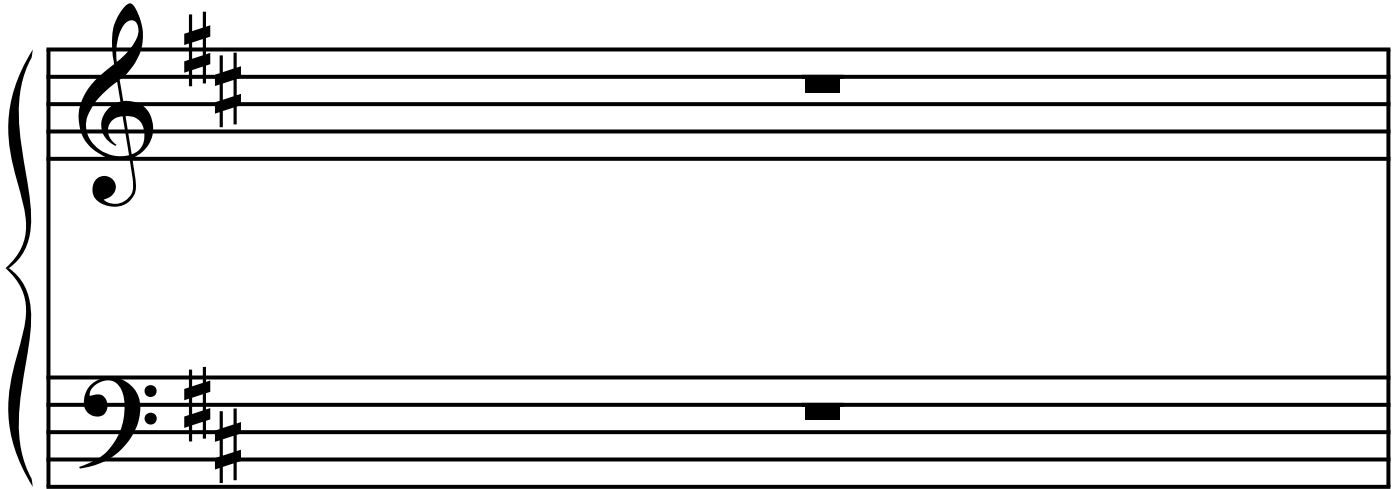
3



4



5



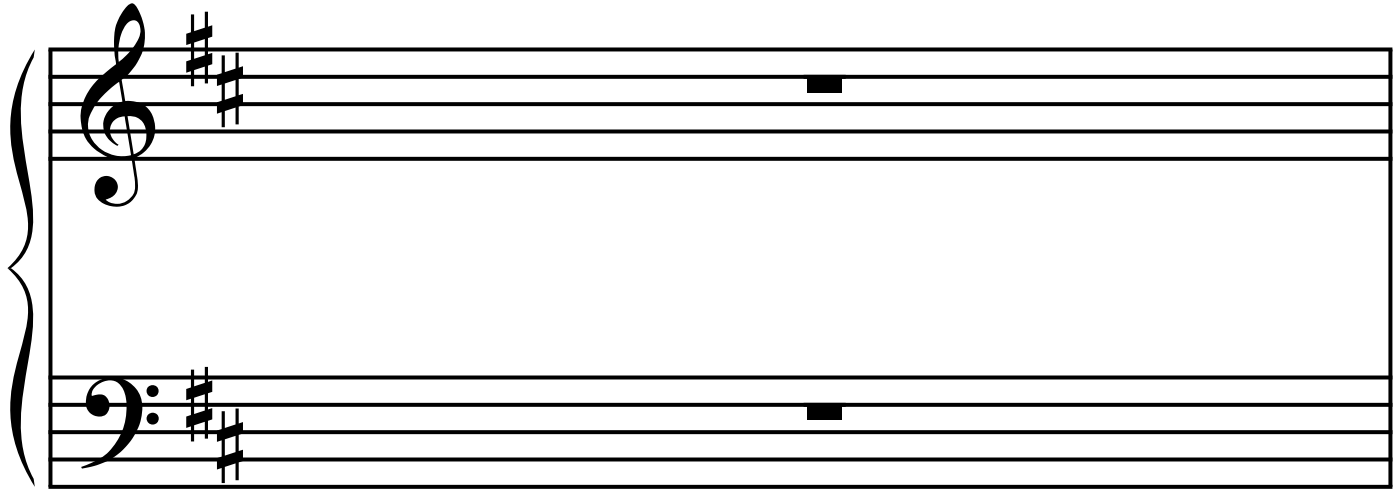
6



4

[Title]

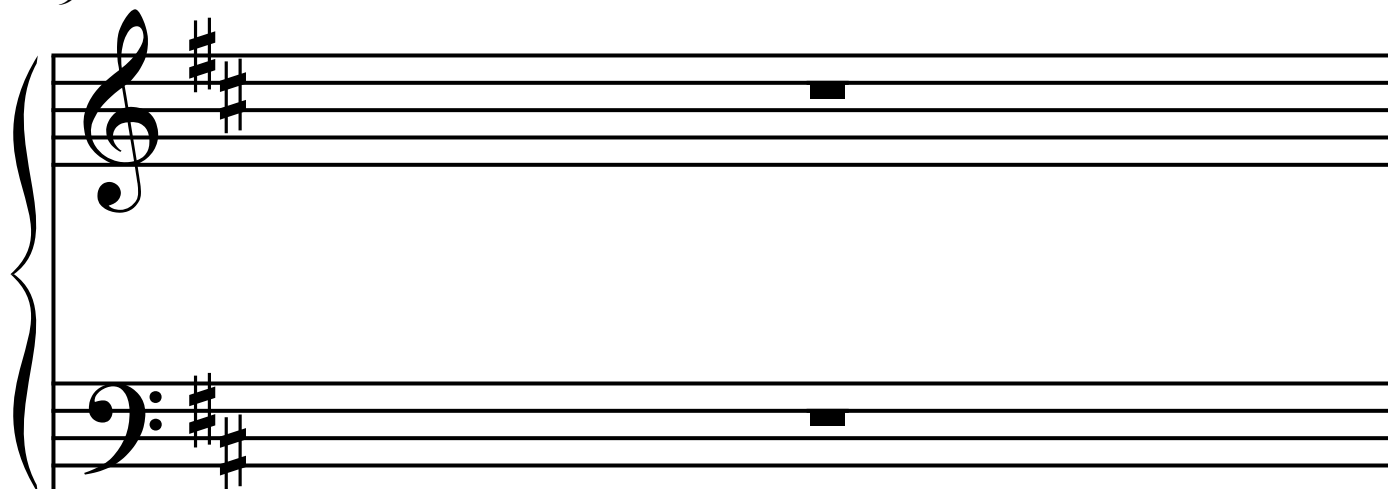
7



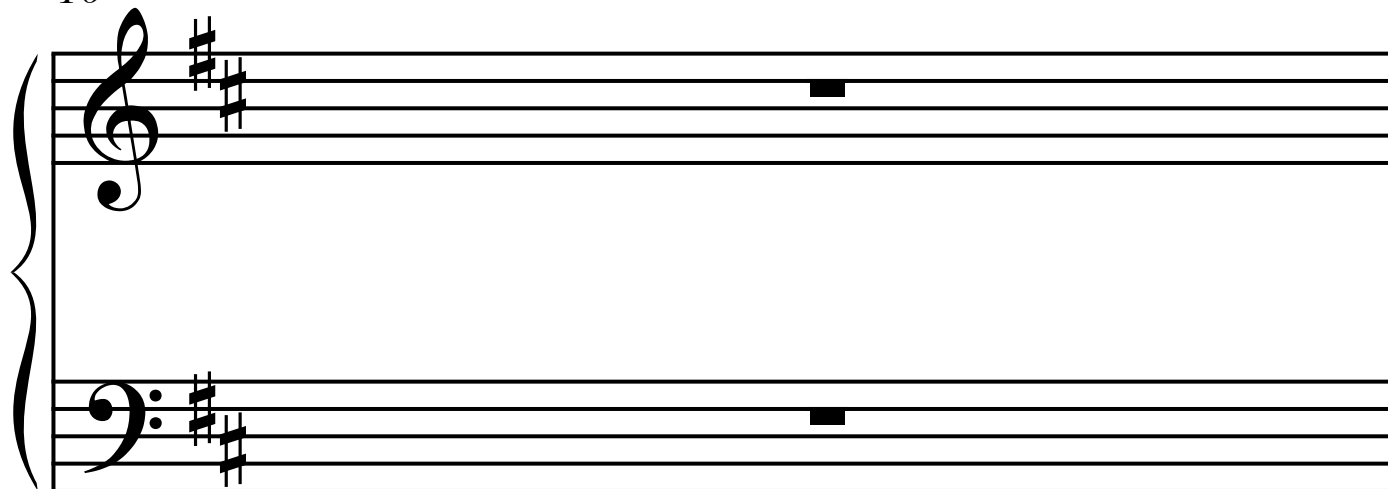
8

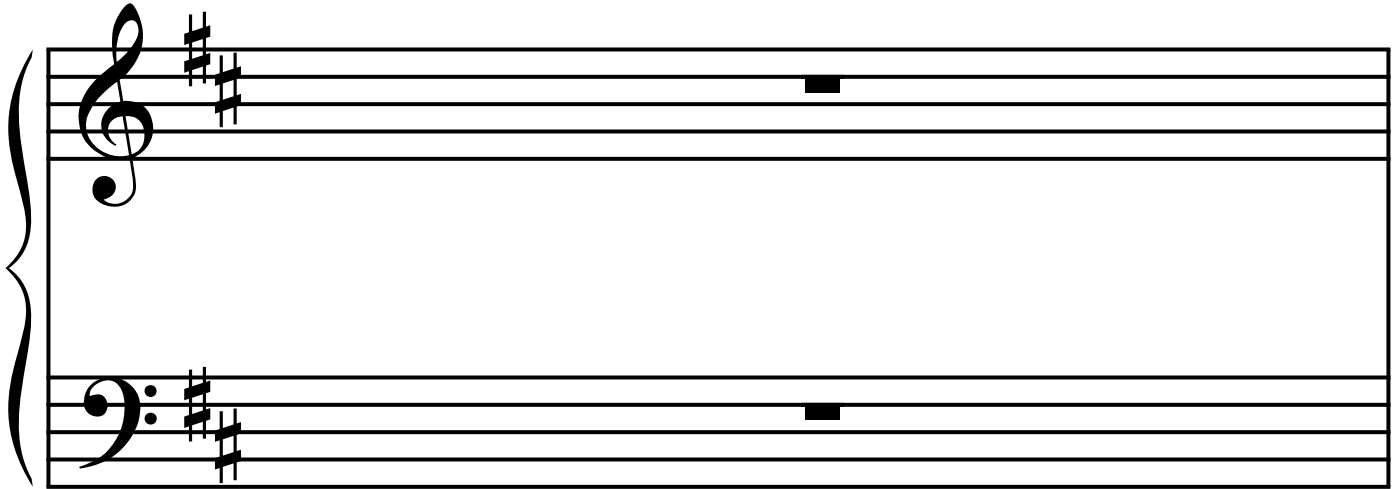


9

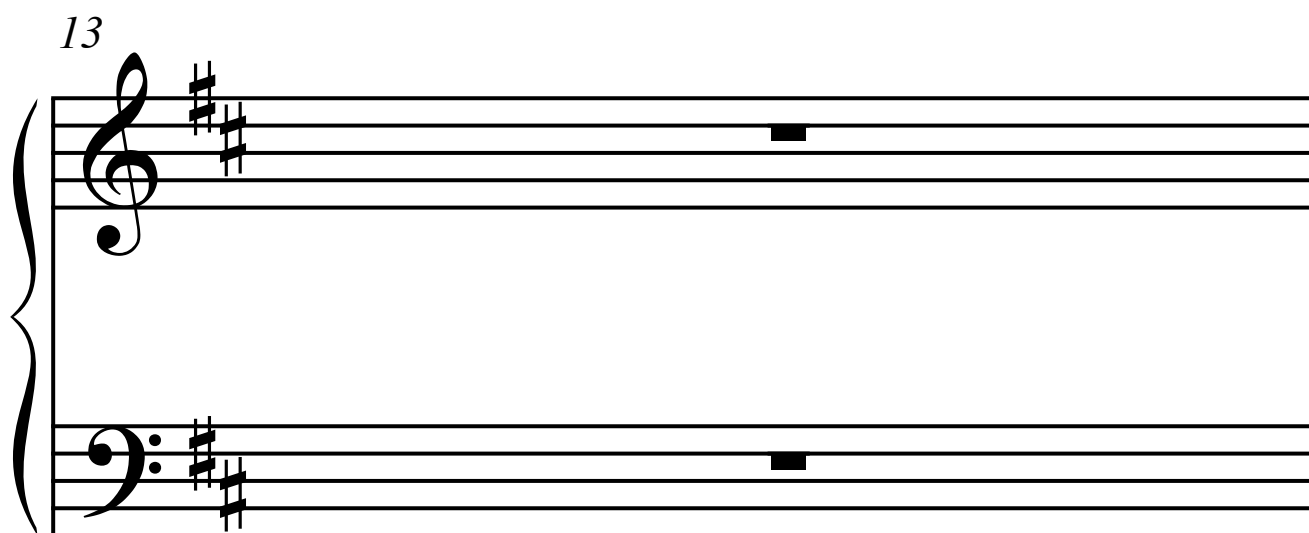


10



11*12*

13



A musical score for two staves, Treble and Bass, with a brace on the left. The key signature is two sharps (F# and C#). Measure 13 contains a whole note chord consisting of F#4, C#5, and F#5. Measure 14 contains a whole note chord consisting of F#4, C#5, and F#5. The staves are empty for measures 15 and 16.

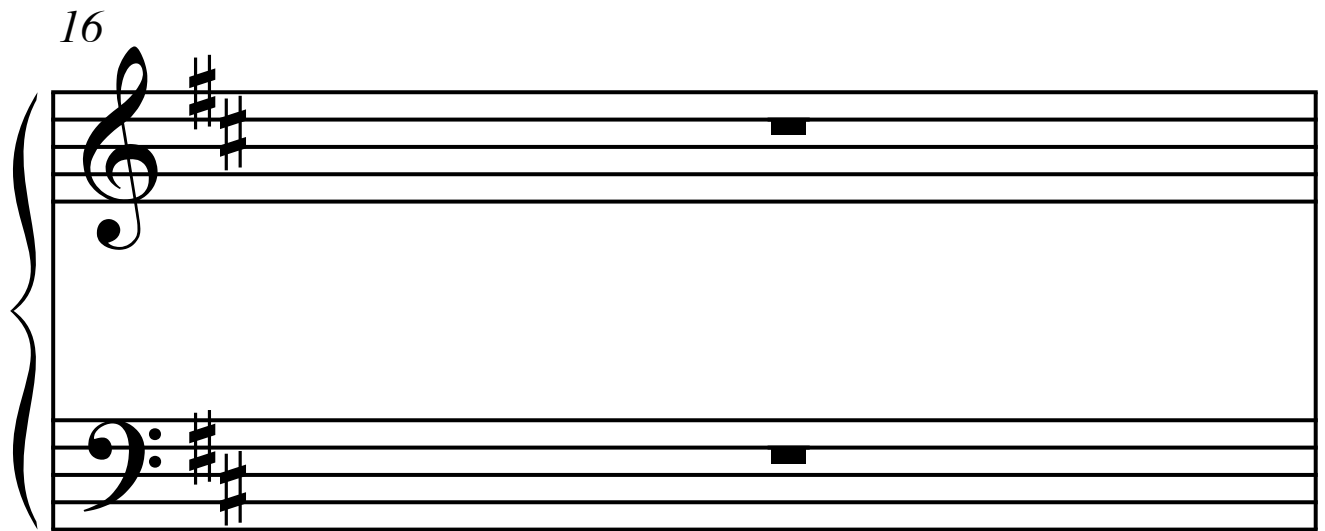
14

A musical score for two staves, Treble and Bass clef, with a key signature of two sharps (F# and C#). The score is for measures 14 and 15. Measure 14 contains a whole note chord consisting of F#4, C#5, and F#5 in the Treble clef, and F#2, C#3, and F#3 in the Bass clef. Measure 15 contains a whole note chord consisting of F#4, C#5, and F#5 in the Treble clef, and F#2, C#3, and F#3 in the Bass clef. The staves are connected by a brace on the left.

15


A musical score for two staves, treble and bass, with a brace on the left. The key signature is two sharps (F# and C#). Measure 15 contains a whole note chord consisting of F#4, C#5, and F#5. Measure 16 contains a whole note chord consisting of F#4, C#5, and F#5. The staves are empty for measures 17 and 18.

16



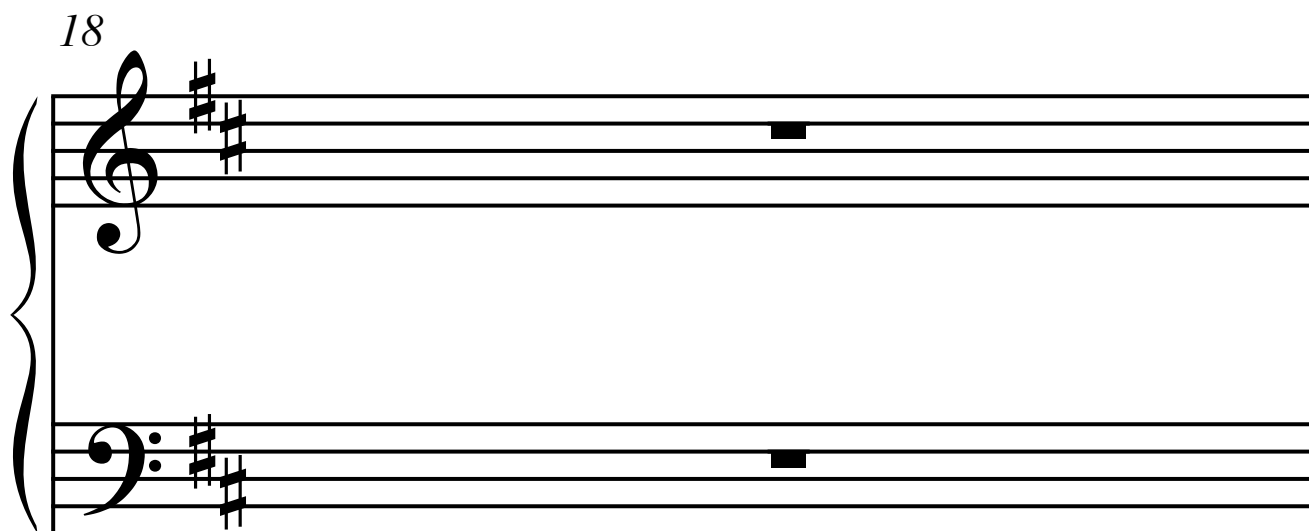
A musical score for two staves, Treble and Bass, grouped by a brace on the left. The key signature is two sharps (F# and C#). Measure 16 (the first measure shown) contains a whole note chord consisting of F#4, C#5, and F#3. Measure 17 (the second measure shown) contains a whole note chord consisting of F#4, C#5, and F#3. The staves are empty for the remainder of the system.

17



A musical score for measures 17 and 18. The score is written on two staves, treble and bass, with a brace on the left. The key signature is two sharps (F# and C#). Measure 17 contains a whole note chord consisting of F#4, C#5, and F#5. Measure 18 contains a whole note chord consisting of F#4, C#5, and F#5. The staves are empty for the remainder of the measures.

18



A musical score for measures 18 and 19. The score is written on two staves, treble and bass, with a brace on the left. The key signature is two sharps (F# and C#). Measure 18 contains a whole note chord consisting of F#4, C#5, and F#5. Measure 19 contains a whole note chord consisting of F#4, C#5, and F#5. The staves are empty for the remainder of the measures.

19



A musical score for two staves, treble and bass, with a brace on the left. The key signature is two sharps (F# and C#). Measure 19 contains a whole note chord consisting of F#4, C#5, and F#5 in the treble clef, and F#2, C#3, and F#3 in the bass clef. Measure 20 contains a whole note chord consisting of F#4, C#5, and F#5 in the treble clef, and F#2, C#3, and F#3 in the bass clef.

20

A musical score for two staves, treble and bass clef, with a brace on the left. The key signature is two sharps (F# and C#). The time signature is not explicitly shown but appears to be common time (C). The score shows measures 20 and 21. In measure 20, the treble staff has a whole note chord of F#4 and C#5, and the bass staff has a whole note chord of F#2 and C#3. In measure 21, the treble staff has a whole note chord of F#4 and C#5, and the bass staff has a whole note chord of F#2 and C#3.

21

A musical score for two staves, Treble and Bass, grouped by a brace on the left. The key signature is D major (two sharps). Measure 21 contains a whole note chord of D4 (treble) and D3 (bass). Measure 22 contains a whole note chord of D5 (treble) and D4 (bass).

21

22

A musical score for two staves, treble and bass, grouped by a brace on the left. The key signature is two sharps (F# and C#). Measure 22 contains a whole note chord consisting of F#4, C#5, and F#3. Measure 23 contains a whole note chord consisting of F#4, C#5, and F#2. The staves are empty for measures 24 and 25.

23

A musical score for two staves, treble and bass, with a brace on the left. The key signature is two sharps (F# and C#). Measure 23 contains a whole note chord consisting of F#4, C#5, and F#3. Measure 24 contains a whole note chord consisting of F#4, C#5, and F#3. The staves are empty for the remainder of the page.

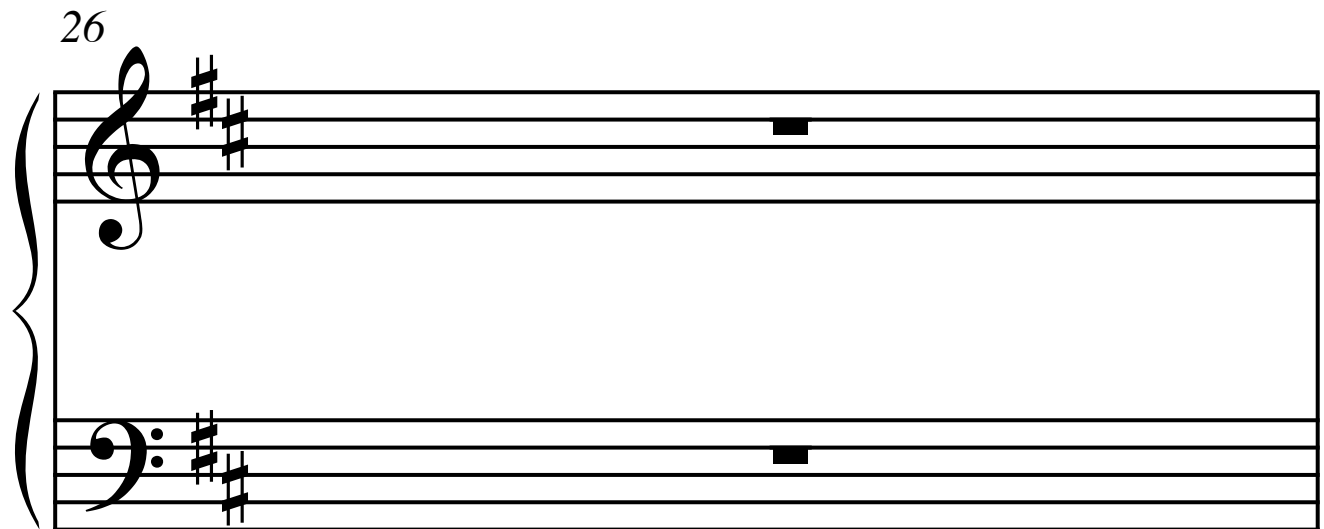
24

A musical score for measures 24 and 25. The score is written for a grand staff, consisting of a treble clef staff and a bass clef staff, both with a key signature of two sharps (F# and C#). The time signature is not explicitly shown but is implied to be 4/4. The notation for measure 24 shows a half note G#4 in the treble and a half note G#2 in the bass. The notation for measure 25 shows a half note G#4 in the treble and a half note G#2 in the bass. The staves are empty for the remainder of the measures.

25

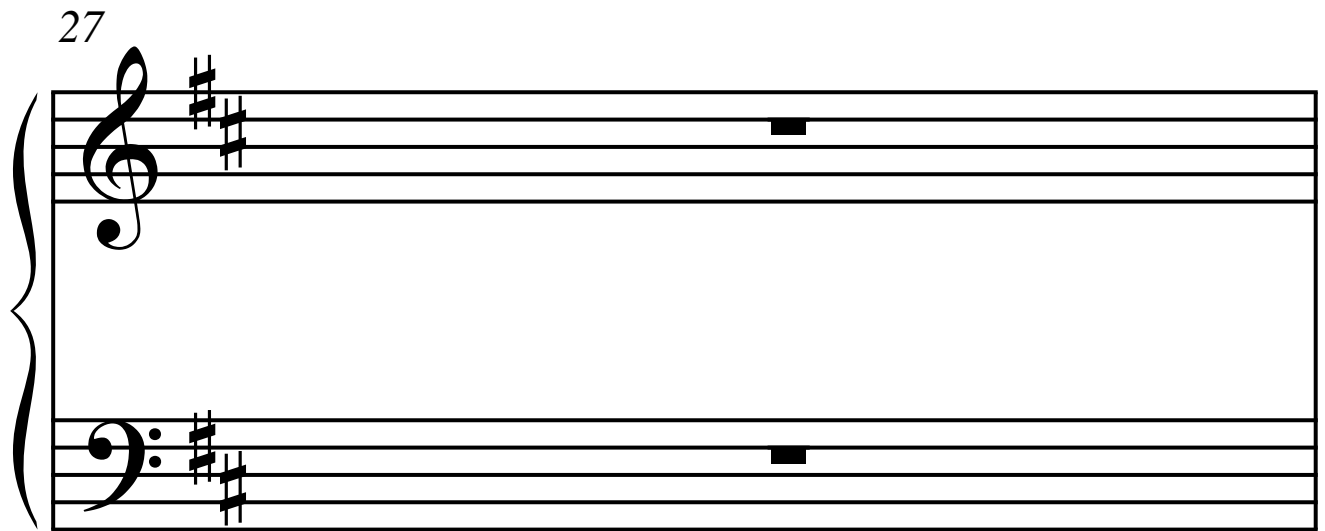
A musical score for two staves, treble and bass, with a brace on the left. The key signature is two sharps (F# and C#). Measure 25 contains a whole note chord consisting of F#4, C#5, and F#3. Measure 26 contains a whole note chord consisting of F#4, C#5, and F#3. The staves are empty for the remainder of the page.

26



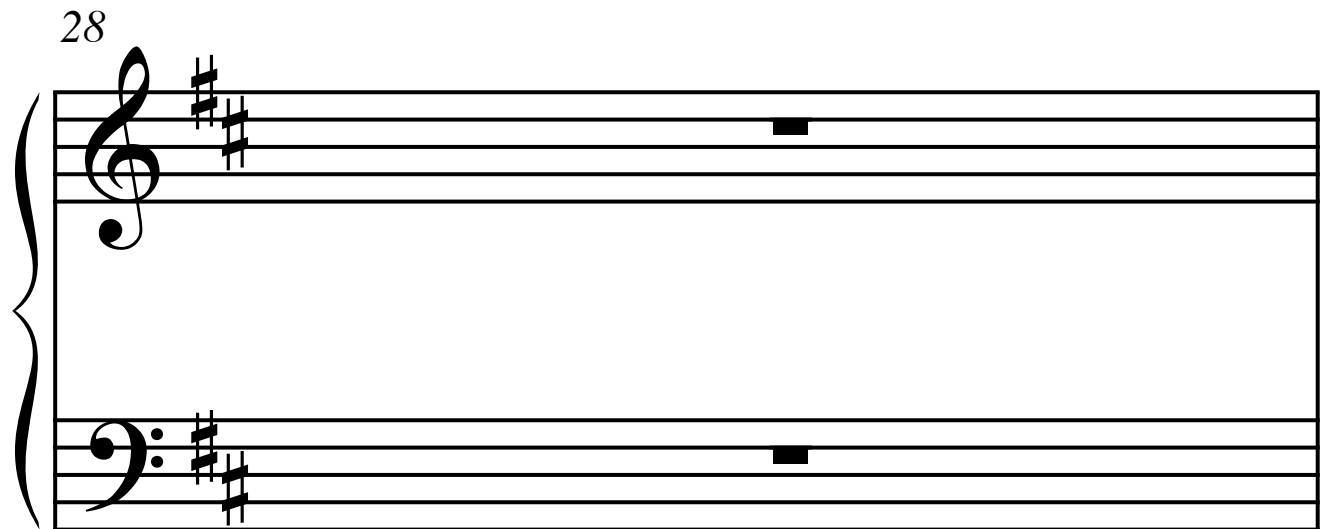
A musical score for two staves, treble and bass, with a brace on the left. The key signature is two sharps (F# and C#). Measure 26 contains a whole note chord consisting of F#4, C#5, and F#3. Measure 27 contains a whole note chord consisting of F#4, C#5, and F#3. The staves are empty for the remainder of the page.

27



A musical score for two staves, treble and bass, with a brace on the left. The key signature is two sharps (F# and C#). Measure 27 contains a whole note chord consisting of F#4, C#5, and F#5. Measure 28 contains a whole note chord consisting of F#4, C#5, and F#5. The staves are empty for the remainder of the page.

28



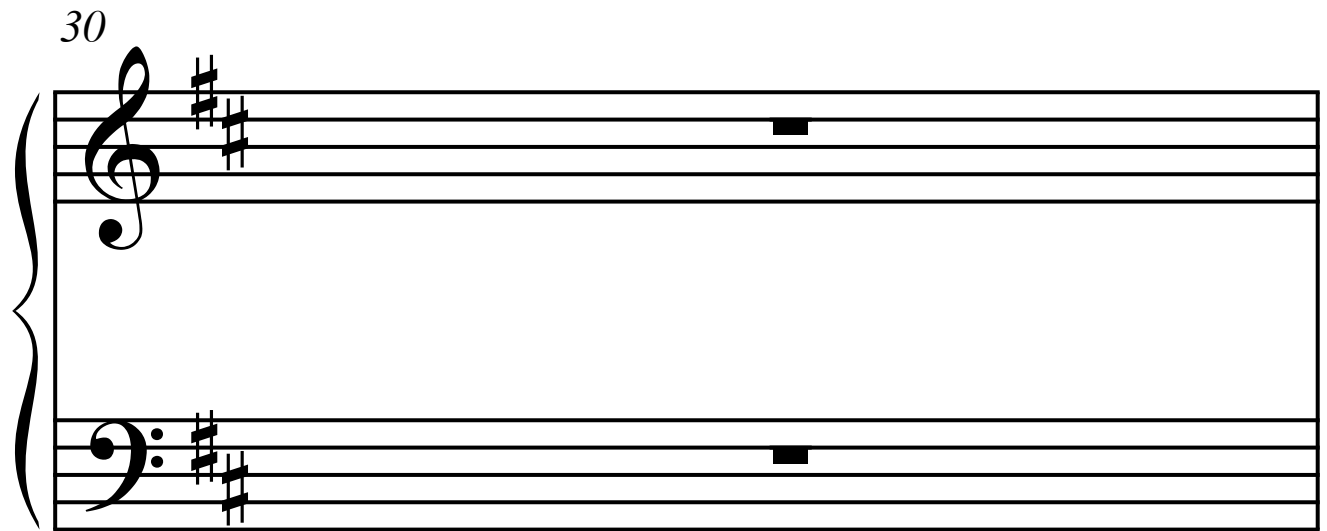
A musical score for measures 28 and 29. The score is written on two staves, treble and bass, with a brace on the left. The key signature is two sharps (F# and C#). The time signature is not explicitly shown but appears to be common time (C). The notation is as follows:

Measure	Treble Clef	Bass Clef
28	Quarter note, D5 (F#4)	Quarter note, D4 (F#3)
29	Quarter note, D5 (F#4)	Quarter note, D4 (F#3)

29

A musical score for two staves, treble and bass, with a brace on the left. The key signature is two sharps (F# and C#). Measure 29 contains a whole note chord consisting of F#4, C#5, and F#3. Measure 30 contains a whole note chord consisting of F#4, C#5, and F#3. The staves are empty for the remainder of the page.

30



A musical score for two staves, Treble and Bass, grouped by a brace on the left. The key signature is D major (two sharps). Measure 30 (the first measure shown) contains a whole note chord of D5 (treble) and D4 (bass). Measure 31 (the second measure shown) contains a whole note chord of D5 (treble) and D4 (bass). The staves are empty for the remainder of the page.

31

A musical score for two staves, treble and bass, with a brace on the left. The key signature is two sharps (F# and C#). Measure 31 contains a half note F#4 in the treble and a half note C#3 in the bass. Measure 32 contains a half note A#4 in the treble and a half note E#3 in the bass. The piece ends with a double bar line.