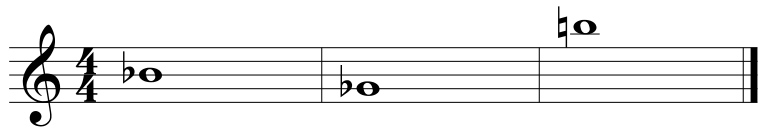


MUTH 5370 Review of Atonal Pitch-Class Set Theory



- 1) ordered pitch intervals:
the number of half steps from one pitch to another with direction
- 2) unordered pitch intervals:
the number of half steps from one pitch to another without direction
- 3) ordered pitch-class intervals:
first note = x; the second = y. ordered pitch class interval = $y - x \pmod{12}$
- 4) unordered pitch-class intervals:
the smaller distance between any two pitch classes
- 5) interval vector:
an array of all the interval classes in a set
- 6) pitch-class set in normal form:
atonal "root position"
- 7) set-class to which the set belongs:
the number of half step distances from one pitch-class to another
- 8) T10 of the set:
are there common tones under transposition at that level? if so what are they?
- 9) T5I of T10:
are there common tones under inversion between T10 and T5I? if so what are they?